



SSV10.4F

10.4" Flip Down TFT Monitor

Congratulations on your purchase of a Sound Storm Video Monitor.

It has been designed, engineered and manufactured to bring you the highest level of performance and quality, and will afford you years of viewing pleasure.

Thank you for making Sound Storm your choice in car video entertainment!

USER'S MANUAL

<i>page</i>	CONTENTS
-------------	-----------------

- | | |
|-----------|------------------------------------|
| 2 | General precautions |
| 2 | Safety precautions |
| 3 | Installation precautions |
| 3 | Operation precautions |
| 4 | Features |
| 4 | What is included? |
| 5 | Monitor controls and features |
| 6 | Remote control |
| 6 | Remote control battery replacement |
| 7 | System wiring |
| 8 | Monitor installation |
| 9 | Releasing and opening the monitor |
| 10 | Powering up the monitor |
| 10 | Turning on the dome lights |
| 11 | Troubleshooting |
| 12 | Specifications |

General precautions

Please read this manual completely and carefully prior to attempting to install your new **Sound Storm** mobile video equipment. Installed correctly, your **Sound Storm** equipment will provide you with years of enjoyable and safe usage.

Installation of this equipment in any portion of a vehicle which impairs or distracts the driver is improper and dangerous. **Sound Storm** assumes no liability whatsoever for failure to follow the proper installation of this product.

Please keep this manual in a safe place for future reference.

Safety precautions

- Do not operate this equipment while driving – safe driving should always be your highest priority.
- This product should not be installed in a location which allows the monitor screen to be visible to the driver of the vehicle. In some states and countries, the viewing of images on a screen inside a vehicle is illegal, even by people other than the driver. Be sure that the installation and operation of this system is in compliance with local rules and regulations.

- Do not open or attempt to repair this unit yourself. Dangerous high voltages are present which may result in electric shock. Refer any repairs to a qualified service technician.

- Do not attempt to repair a damaged, broken or faulty power cord. Replace it with a new one immediately.

- To avoid risk of electronic shock or damage to the monitor, do not permit any of this equipment to become damp or wet from water or drinks. If this does occur, immediately unplug the power cord and send the monitor to your local dealer or service center as soon as possible.

- If there is smoke or any peculiar odor present during use or if there is damage to any of the component enclosures, immediately unplug the power cord and send the monitor to your local dealer or service center as soon as possible .

SHOCK HAZARD! Do not open the case of this product. There are dangerous voltages present within the unit. There are no user-serviceable parts within the unit.

Installation precautions

Choose a mounting location in your vehicle where the unit will not distract or otherwise interfere with the driver's ability to control the vehicle.

Do not install components in areas which are susceptible to rain, moisture, direct sunlight, extreme heat or cold, excessive dust, dirt or humidity.

If installation requires drilling holes or other modifications to the vehicle, consult with your nearest dealer or professional car audio installer.

Use only the installation parts and hardware provided with the unit to ensure proper installation. Using other parts can cause malfunction and possible damage to your **Sound Storm** video monitor.

Use only a power source with 12 Volts DC (negative ground).

Before final installation, temporarily connect the wiring according to the diagram near the end of this manual, check it to ensure that it has been connected properly, and test the unit to make sure it is working correctly.

After the monitor is installed, do not arbitrarily pull it down or strike it. This may loosen the mounting screws and cause it to fall down.

Operating precautions

Turn the unit off when it is not in use.

Avoid dropping any metal objects or inflammable items into the monitor ventilation slots.

Do not place objects on or suspend objects from the power cord, as this may damage the cord.

Features

Your new video monitor features the following:

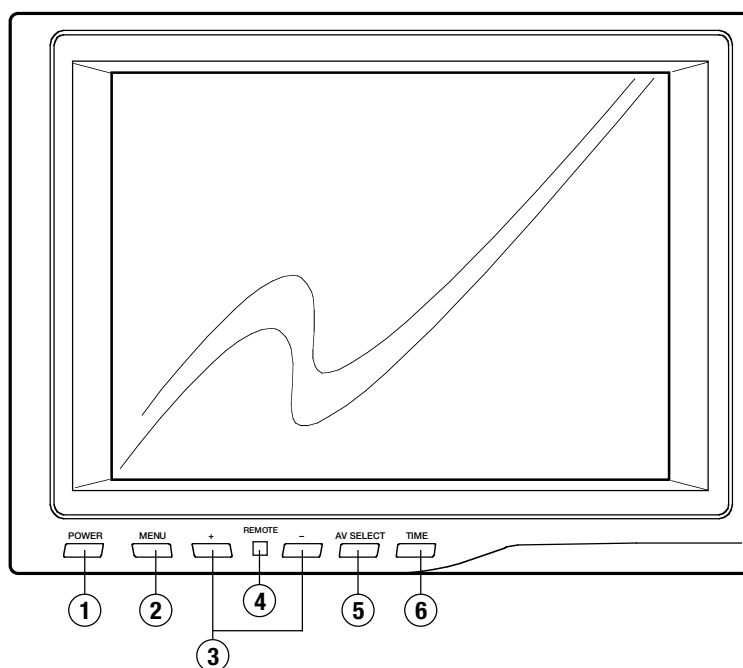
- **TFT Active Matrix LCD display**
- **Overhead console mounting bracket**
- **On-screen menu system**
- **Audio/video input controls**
- **Built-in dome lights**
- **Wireless remote control**

What is included?

When first unpacking your new flip-down monitor, please check first that the package contains all of the items below. If something is missing, contact the store where you purchased the player.

- **LCD monitor housing**
- **Wireless remote control with batteries**
- **RCA video cable**
- **Video/power interface cable with inline fuse**
- **Metal mounting plate**
- **(4) silver 1/2" machine screws**
(for attaching monitor to mounting plate)

Monitor Controls and Features

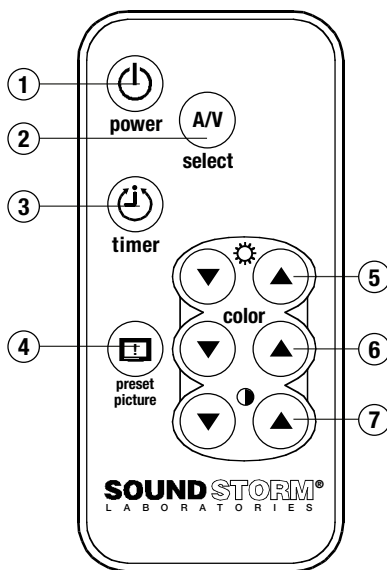


- ① **POWER ON/OFF**
This button turns the monitor system on and off.
- ② **MENU**
This button enables the on-screen display menu system. Once enabled, this button is used as an ENTER button.
- ③ **UP/DOWN BUTTONS**
These buttons are used to increase or decrease parameters in the on-screen display menu system.

- ④ **REMOTE IR SENSOR**
- ⑤ **A/V SOURCE SELECTOR**
Use this button to switch between A/V Source 1 and A/V Source 2.
- ⑥ **TIME**
This monitor shuts off automatically after a certain period of non-use. Use the time button to change the length of time required before auto shut-off.

Remote Control

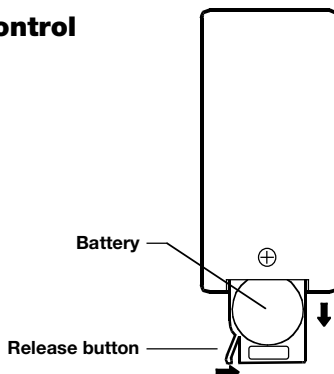
- ① **POWER**
Press to turn unit ON or OFF.
- ② **VIDEO SOURCE SELECT**
Pressing this button will switch the monitor to the other video input source.
- ③ **TIMER**
This monitor shuts off automatically after a certain period of non-use. Use the time button to change the length of time required before auto shut-off.
- ④ **PRESET PICTURE**
This button returns the monitor to its factory settings for brightness, color and contrast.
- ⑤ **BRIGHTNESS UP/DOWN**
Use these buttons to decrease or increase the brightness of the displayed image.
- ⑥ **COLOR ADJUSTMENT**
Use these buttons to adjust the color of the displayed image.
- ⑦ **CONTRAST ADJUSTMENT**
Use these buttons to decrease or increase the contrast of the displayed image.



Changing the battery in the remote control

The remote battery is held in a small “drawer” on one edge of the remote. To open this drawer, press and hold the small button on the edge of this drawer (as shown below) and slide the drawer out.

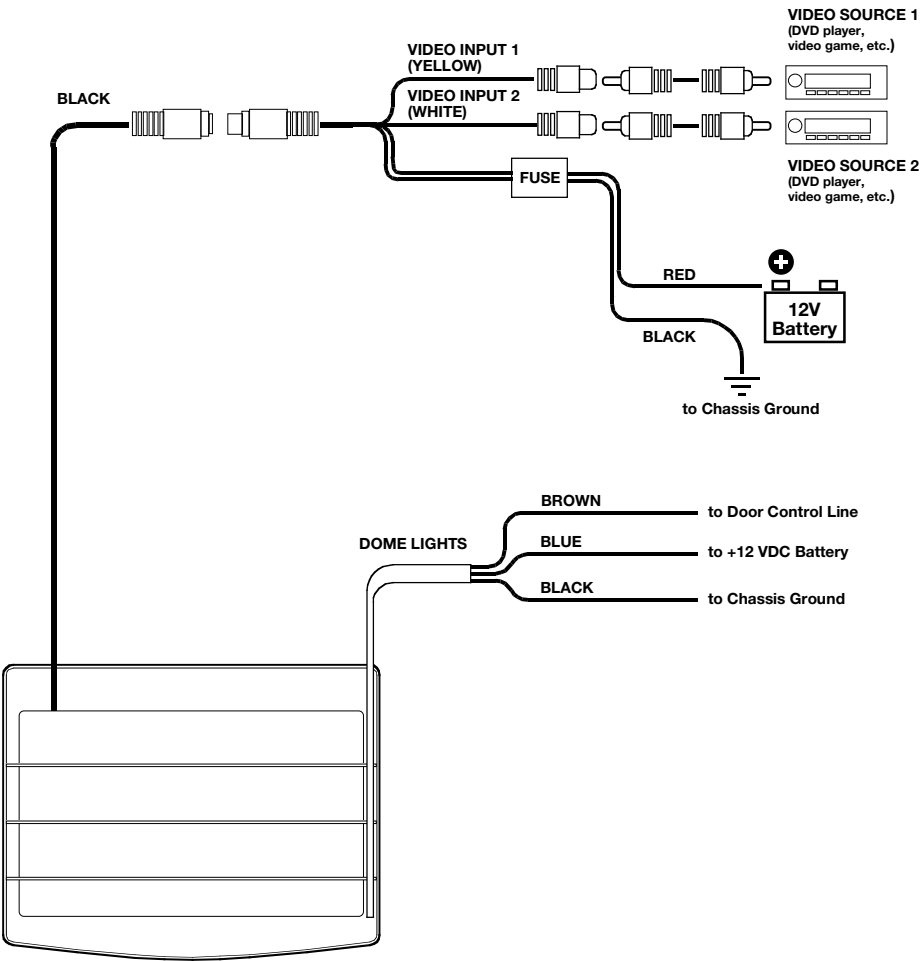
Insert a new battery and push the drawer back fully into the remote.



System wiring

On a towel or soft cloth, gently place the monitor assembly “face down” on a stable work surface.

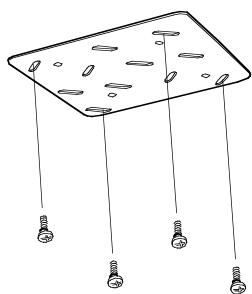
Using the wires provided, complete the audio, video and power connections in your vehicle as shown in the diagram below.



Monitor installation

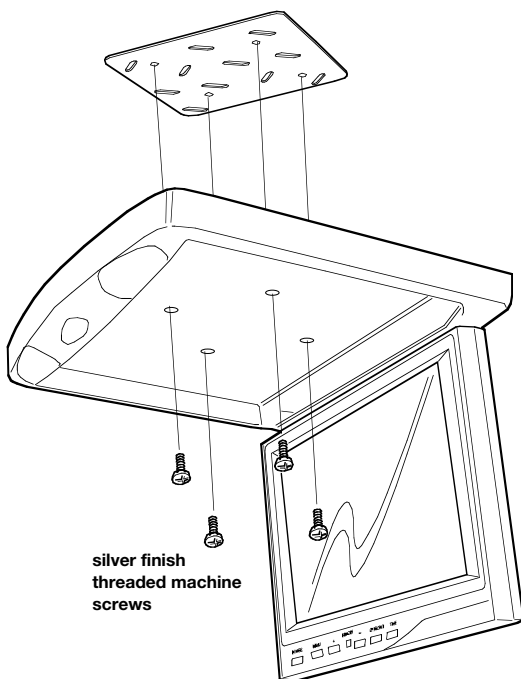
CAUTION: Make sure the screws are **NOT** long enough to go through the roof!

If you have any doubts about this type of installation, please consult your local mobile electronics retailer. Making holes in the roof of your vehicle will cause damage which is expensive to repair.



1/2" black self tapping sheet metal screws

Using the four black self-tapping screws provided, attach the monitor mounting plate by screwing through the headliner and into the existing roof supports or the wood bracket you made (see TIP below).



silver finish threaded machine screws

Thread all the wires through the round hole in the center of the mounting plate.

Install the monitor onto the mounting plate, using the four screws provided.

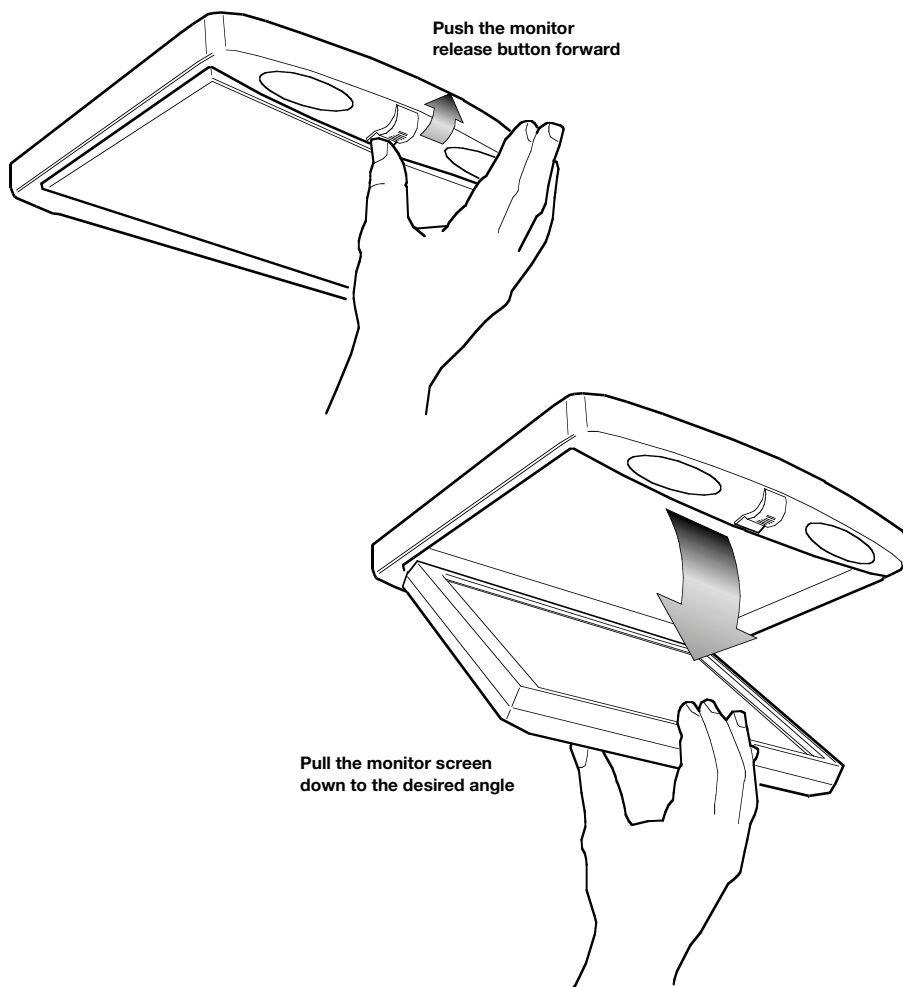
INSTALLATION TIP

Make a MOUNTING BRACKET out of wood. This bracket mounts under the headliner, and provides a mounting surface to which the housing of the flip-down monitor can be attached.

Releasing and lowering the monitor

To lower the monitor, press the Monitor Release button and pull the monitor down. It will drop freely to 45°.

To lower the monitor further, continue pulling down and the internal mechanism will permit further movement and will hold the monitor in the position in which you leave it.



To avoid accidental damage, we suggest you always close the monitor assembly when it is not in use. To do so, rotate the monitor back to a 0° left-to-right position, and push it up into the monitor base until you hear a “click.” Test that it is secured by gently pulling down on monitor frame.

Powering up the monitor

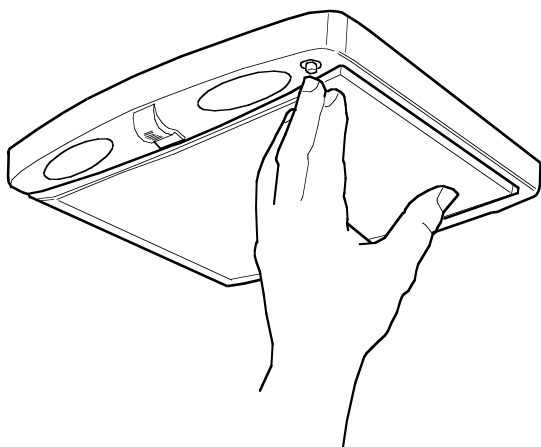
To turn the monitor on, press and hold the POWER button for two seconds. When the power is ON, if an input signal is present, the picture will be displayed on the screen. If no signal is present, the monitor will display the message "NO SIGNAL."

If you know a video input signal is present but the monitor displays "NO SIGNAL," be sure to try pressing the AV SELECT button to see if your input source is connected to the other AV input.

To adjust the monitor image, press MENU to access the various adjustment controls such as BRIGHTNESS and CONTRAST. Use the +/- buttons to adjust each parameter until you are satisfied with the picture quality.

Turning on the dome lights

This unit features dual dome lights, which turn on when you open a door. To turn the dome lights on or off manually, simply press the round button near the right dome light.



Troubleshooting

If you experience operation or performance problems with this product, compare your installation with the electrical wiring diagram on the previous page. If problems persist, read the following troubleshooting tips which may help eliminate the problems.

SYMPTOM	CAUSE	REMEDY
No picture or sound.	Power cord is not properly connected.	<i>Check that power connections are properly made and all fuses are in functioning condition.</i>
	A/V input cables not properly connected.	<i>Check all cables.</i>
	A/V input source is not operating properly.	<i>Replace or repair A/V source (DVD player, video game, etc.)</i>
No picture.	A/V signal not present.	<i>Check all cables. If necessary, repair or replace A/V source.</i>
	Contrast and/or brightness is set improperly.	<i>Adjust contrast and brightness levels to see if picture appears.</i>
	TV reception is poor (applies to system with TV tuner only)	<i>Check and adjust antenna system. Move to another area with better reception, if possible.</i>
Remote control does not function properly.	Battery is dead.	<i>Replace battery.</i>
	Remote is not being used in direct line-of-sight with the player or remote IR sensor. Transmission is best within 6 feet/35° angle of IR sensor on the monitor.	<i>Be sure when being used, the remote is being pointed directly toward the player or remote IR sensor (if installed).</i>

Specifications



MODEL	SSV10.4F <i>10.4" Flip Down TFT Monitor</i>
--------------	---

A/V SYSTEM

Screen size	10.4"
Video Compatibility	NTSC/PAL auto-compatible
LCD panel type	Active Matrix TFT
Resolution, pixels	1152 x 234
Brightness	450 NITS

GENERAL

Operating voltage	12V DC
Dimensions (L x W x H)	12.5 x 11.4" x 1.5"

All specifications subject to change without notice.