

ML40USA

IN-DASH DIGITAL MEDIA AM/FM
RECEIVER MP3-COMPATIBLE WITH USB,
SD CARD PORTS AND FRONT AUX INPUT



SOUNDSTORM[®]
L A B O R A T O R I E S

3451 LUNAR COURT, OXNARD CA 93030

PHONE: 888.38.STORM

805.983.8008

FAX: 805.983.7068

TECHNICAL SUPPORT

www.soundstormlab.com



01.13



User Manual

ML40USA

IN-DASH DIGITAL MEDIA AM/FM
RECEIVER MP3-COMPATIBLE WITH USB,
SD CARD PORTS AND FRONT AUX INPUT

Table of Contents

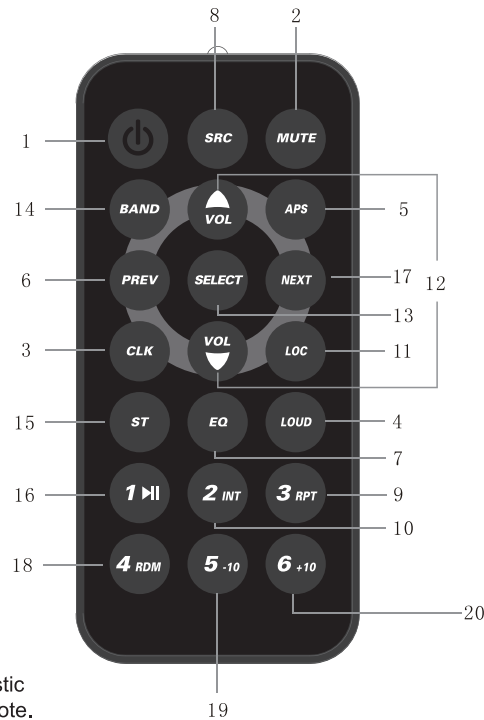
Table of Contents

Table of Contents	1
Safety information	2
Panel Control	3-4
Electrical Connections	5
Installation Guide	6
Trouble shooting	7
Specifications	8
Remote Handset	9

Control location of remote handset

Safety information

- 1.Power On/Off
- 2.Mute Button
- 3.Clock Display And Setting Button
- 4.Loudness Button
- 5.Aps Button
- 6.Previous Button
- 7.Preset EQ Function (Flat/Pop/Rock/Class)
- 8.Mode Selector
- 9.Track Repeat Button & Preset 3
- 10.Intro Play Button & Preset 2
- 11.Local Button
- 12.Volume Control
- 13.Audio Control/Function Selector
- 14.Band Selector
- 15.Stereo Button
- 16.Play/Pause Button & Preset 1
- 17.Next Button
- 18.Random Play Button & Preset 4
- 19.MP3 Track Down Button Preset 5
- 20.MP3 Track UP Button & Preset 6



Note: To operate remote, pull out the plastic from battery compartment at back of remote. Then point remote at unit and start.

READ THIS MANUAL THOROUGHLY BEFORE USING THIS UNIT AND KEEP THIS MANUAL FOR FUTURE REFERENCE!!!

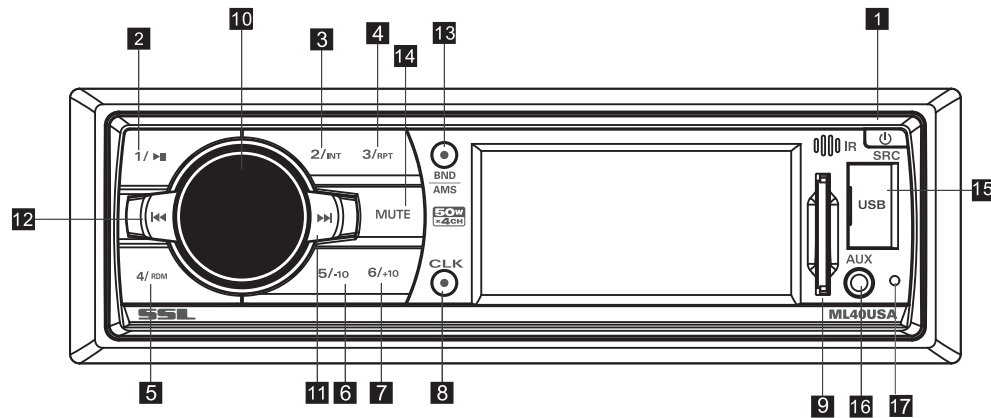
Precautions & Warning:

- To reduce the risk of fire, electric shock, and annoying interference, do not repair yourself. Please refer serving to qualified person.
- SOME MP3/WMA FILES MAY NOT PLAYABLE.
- Keep lower volumes to concentrate on traffic and road conditions for safety driving.
- If users' car is under sunlight for sometime, please lower the temperature inside the car then start the player operation.
- If the battery is disconnected or discharged or changed, the preset memory will be erased and must be reprogrammed.
- Installation of unit is better at a horizontal position, or if it is at an angle, it may be not working at its best situation.
- Never use force or grip the display and the buttons tightly when removing or attaching, BE SURE TO LOWER THE VOLUME BEFORE SWITCHING OFF THE UNIT OR THE IGNITION KEY. as unit remembers its last volume setting. If user switches the power off with high volume setting, then user switches the power ON again, the sudden loud volume may hurt the ears and damage the unit.

1.PWR/SRC

Press the POWER button to turn on the unit, and long press it again to turn off the unit. When the unit turns on, short press POWER/SRC button to switch the unit between RADIO, USB & SD & AUX modes (if there are, USB and SD card inside the unit).

1/. If there is no USB & SD card, then it will be only radio broadcasting, And AUX, when user insert USB then LCD will show the USB, showing the "CARD" for SD insertion.



2-7.(button 1 to 6) PRESET MEMORY BUTTONS In Radio mode

To memorize the frequency, press one of the six preset buttons (1-6) hold for more 2" S, the frequency is successfully stored.

Therefore there are FM1, FM2, FM3, AM1 & AM2, each band can store 6 stations, so total 30 stations can be stored.

To recall the preset memory station, press one of the preset buttons (1-6) plus the BND button for FM1, FM2, FM3, AM1 & AM2.

General

Power supply:	12V DC
Maximum power output:	High power
Suitable speaker impedance:	4-8 ohm
Unit Dimensions(WxHxD):	178X50X97mm
Weight:	1.0KG
Fuse:	5A

FM Stereo Radio

Frequency Range:	87.5MHz-107.9MHz
Channel step:	200KHz

AM Stereo Radio

Frequency Range:	530KHz-1710KHz
Channel step:	10KHz

Components

Mounting collar:	1
User manual:	1
Remote controller:	1

Note: Specifications and the design are subject to change without notice due to improvements in technology.

If you suspect something is wrong immediately switch power off. Do not use the unit in abnormal condition, for example without sound, or with smoke or foul smell, can cause fire or electric shock. Immediately stop using it and call the store where you purchased it. Never try to repair the unit yourself because it is dangerous to do so.

General

No power or
no sound

Car's engine switch is not on. Turn your car's key to ACC or ON.
Cable is not correctly connected. Check connection.
Fuse is burnt. Replace fuse. Check volume or mute on/off.

Radio

Much noise in
broadcasts

Station or signal is too weak.
Select other stations of stronger signal level

Preset station
is reset

Battery cable is not correctly connected.
connect the battery cable to the terminal that is always live

USB / SD

USB or SD card
is connecting but
No Sound

USB or SD card connection is not good.
Take it out and insert again.
USB or SD card is damaged or no music file inside.
Change to another USB or SD card, or record music inside it.

8. CLK

Press CLK button once to display the real time. With time appearing on the display, Press and hold CLK button for more than 2 seconds, until the time flashes. You can then adjust HOUR and MINUTE by pressing the |<< button and >>| button respectively.

9. SD/MMC CARD INSERT PORT

10. VOLUME adjustment

Under normal start, rotate "VOL+" or "VOL-" to increase or decrease the VOL of sound level output. Press VOL knob, it will be switching the sequence as
1. USB/SD function, rotate VOL button to enter EQ function that audio mode in following order:



2. Function select button: Bass/Treble/Balance/Fader/EQ off

11. FF (>>|) & 12. FB (|<<)

During Radio operation, Long press FF (>>|) or FB (|<<) for more than 2'S, unit will be into the next or previous frequency step by step. short press FF (>>|) or FB (|<<) to AUTO TUNER station. It will be stop until find a station.

13. BND/AMS

Short press the BND/AMS button to select one of the radio broadcasting bands one by one: FM1 → FM2 → FM3 → AM1 → AM2, when you select a band, the word "F1, F2, F3" for FM band, and "A1, A2" for AM band will be shown on the LCD display. Long press BND/AMS button for several seconds, the radio searches from the current frequency and checks the signal strength until one cycle search is finished. And then 18 strongest stations are stored into the corresponding preset number button for FM and 12 strongest stations for AM.

14. MUTE

Short press MUTE to turn MUTE ON/OFF, when it is ON, the MUTE will be flickering on the LCD and no sound output. When short press again it will be cancelled.

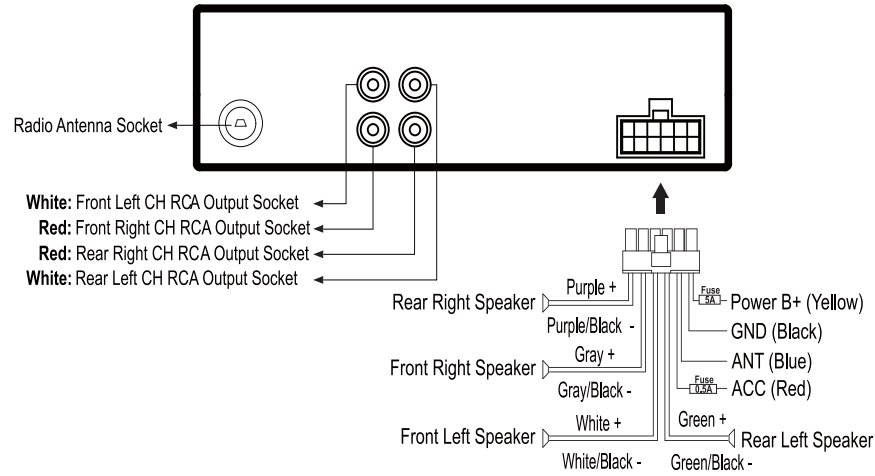
15. USB INSERT PORT

16. AUX IN JACK

17. RESET Button

CAUTION

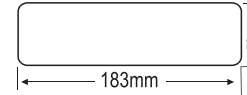
+12V DC NEGATIVE GROUND



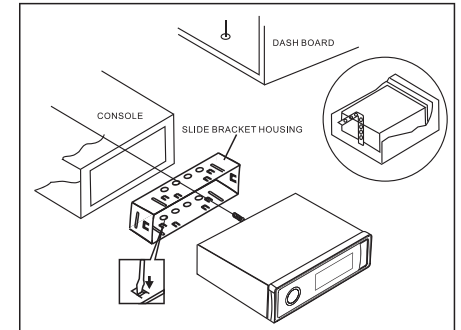
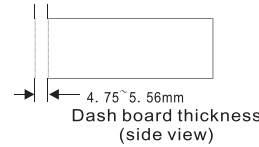
Installation Procedures

First complete the electrical connections, and then check for correctness

Installation Opening



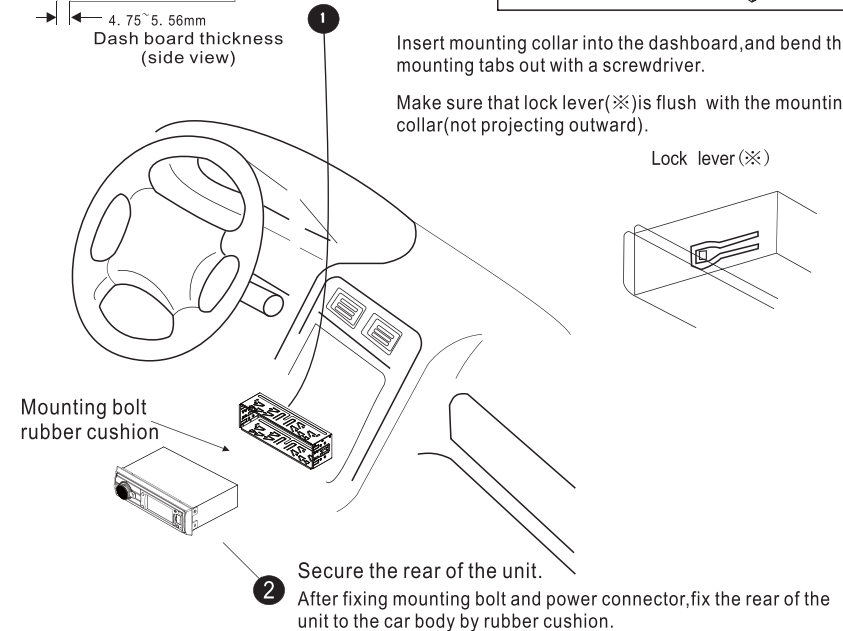
This unit can be installed in any dashboard Having an opening as shown above. The Dashboard should be 4.75mm-5.56mm thick in order to be able to support the unit



Insert mounting collar into the dashboard, and bend the mounting tabs out with a screwdriver.

Make sure that lock lever(※) is flush with the mounting collar (not projecting outward).

Lock lever (※)



2 Secure the rear of the unit. After fixing mounting bolt and power connector, fix the rear of the unit to the car body by rubber cushion.